

vetal – Modular System

For an active life for DOGS



Elbow brace for dogs

Kybi stabil

The stabilising elbow brace for functional support in cases of joint instability, ligament weakness, osteoarthritis and elbow dysplasia.

Includes:

- 1x Upper bandage with connecting strap
- 1x Counter-pull bandage with connecting strap
- 2x VET Stabiliser Alu 14 mm or VET Stabiliser Alu 10 mm
- 1x Lower bandage
- 1x Kybi Attachment harness

Kybi CDS®

The dynamic elbow brace with spring joint for mobilisation after paralysis and contracture treatment.

Includes:

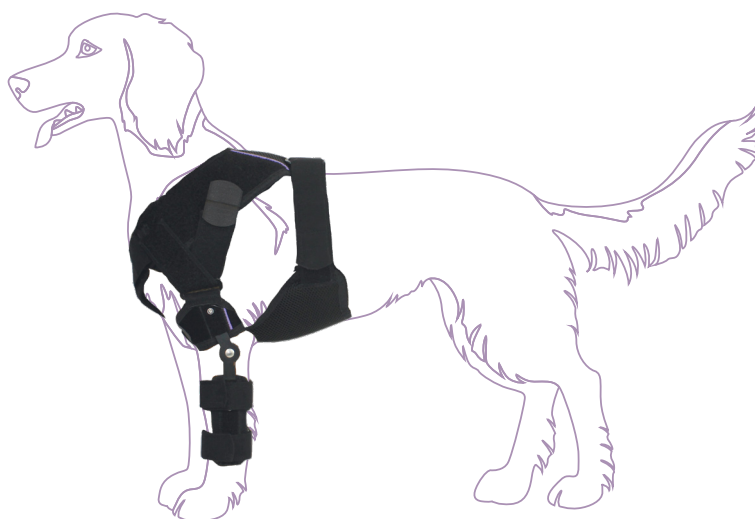
- 1x Upper bandage with connecting strap
- 1x Counter-pull bandage with connecting strap
- 1x VET Stabiliser Alu 14 mm (medial)
- 1x VET CDS® Nano Hinge Alu 14 mm (lateral)
- 1x Lower bandage
- 1x Kybi Attachment harness

Kybi ROM

For immobilisation and a gradual, controlled return to movement after injury and surgery.

Includes:

- 1x Upper bandage with connecting strap
- 1x Counter-pull bandage with connecting strap
- 1x VET Stabiliser Alu 14 mm (medial)
- 1x VET ROM Nano Hinge Alu 14 mm or VET ROM Piko Hinge Alu 14 mm (lateral)
- 1x Lower bandage
- 1x Kybi Attachment harness



Please measure your dog

Please select the appropriate Kybi Attachment harness using the table and measurements C, D and E.

Please choose the upper and lower bandages according to circumference measurements 3 and 4 respectively.

Attachment harness



Size	XS	S	M	L	XL	XXL	3XL
Back length [cm]	25 - 29,5	30 - 36,5	37 - 43,5	44 - 52,5	53 - 61,5	62 - 70,5	71 - 80
Neck circumference [cm]	23 - 40	25 - 44	33 - 45	35 - 50	43 - 60	46 - 66	50 - 80
abdominal circumference [cm]	30 - 45	40 - 55	48 - 68	58 - 80	60 - 85	65 - 94	65 - 115
Art.-No.	0700-502XS	0700-502S	0700-502M	0700-502L	0700-502XL	0700-502XXL	0700-5023XL

Elbow Joint – Kybi stabil | ROM | CDS®

Upper bandage (Kybi bandage) – supplied with connecting strap
Fastened at the front



Size	L	M	S	XS („Mini“-version)
Mid upper-arm circumference [cm]	23 - 26	20 - 23	16 - 20	12 - 16
Art.-No. left	0700-020L-L	0700-020M-L	0700-020S-L	0700-020XS-L
Art.-Nro right	0700-020L-R	0700-020M-R	0700-020S-R	0700-020XS-R

Kybi counter-pull bandage – supplied with connecting strap



Size	L	M	S	XS („Mini“-version)
Art.-No. left	0700-021L-L	0700-021M-L	0700-021S-L	0700-021XS-L
Art.-Nro right	0700-021L-R	0700-021M-R	0700-021S-R	0700-021XS-R

Hinge

Description Hinge	VET Stabiliser Alu 14 mm	VET ROM Nano Hinge Alu 14 mm	VET CDS® Nano Hinge Alu 14 mm	VET ROM Piko Hinge Alu 14 mm	VET Stabiliser Alu 10 mm
Rod width [mm]	14				10
Suitable for shell size	L, M, S				XS
Rod length [cm]	18	18	18	18	8
Art.-No. left	0700-2010-14	0700-2020-14-L	0700-3010-14-L	0700-2030-14	0700-2010-10
Art.-Nro right	0700-2010-14	0700-2020-14-R	0700-3010-14-R	0700-2030-14	0700-2010-10

Lower bandage (Kybi bandage)



Size	L		M		S		XS	
shell height [cm]	10		7		4		3	
Mid-forearm circumference [cm]	L-1 12 - 15	L-2 15 - 18	M-1 11 - 14	M-2 14 - 17	S-1 9 - 12	S-2 12 - 16	XS-1 7 - 11	XS-2 11 - 16
Art.-No.	0700-003L1	0700-003L2	0700-003M1	0700-003M2	0700-003S1	0700-003S2	0700-003XS1	0700-003XS2



Knee Brace for dogs

Goni stabil

The Goni stabil knee brace for dogs stabilises and relieves pressure on the knee joint during rehabilitation.

Includes:

- 1x Upper bandage with connecting strap
- 1x Counter-pull bandage with connecting strap
- 2x VET Stabiliser, Alu 14 mm or VET Stabiliser, Alu 10 mm
- 1x Lower bandage
- 1x Goni Attachment harness

Goni CDS®

The dynamic knee brace with spring joint for mobilisation after paralysis and contracture treatment.

Includes:

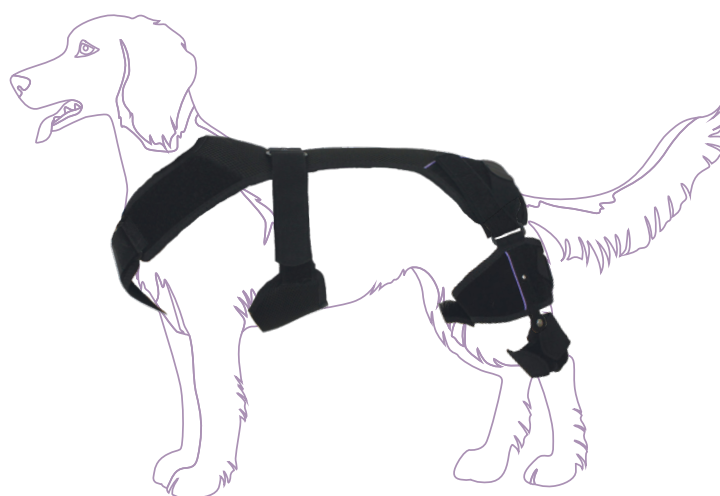
- 1x Upper bandage with connecting strap
- 1x Counter-pull bandage with connecting strap
- 1x VET Stabiliser, Alu 14 mm (medial)
- 1x VET CDS® Nano Hinge, Alu 14 mm (lateral)
- 1x Lower bandage
- 1x Goni Attachment harness

Goni ROM

The stabilising knee brace for immobilisation and gradual, controlled return to movement after injury and surgery.

Includes:

- 1x Upper bandage with connecting strap
- 1x Counter-pull bandage with connecting strap
- 1x VET Stabiliser, Alu 14 mm (medial)
- 1x VET ROM Nano Hinge, aluminium 14 mm or VET ROM Piko Hinge, Alu 14 mm (lateral)
- 1x Lower bandage
- 1x Goni Attachment harness



Please measure your dog

Please select the appropriate Goni Attachment harness using the table and measurements C, D and E.

Please choose the upper and lower bandages according to circumference measurements 3 and 4 respectively.

Attachment harness



Size	XS	S	M	L	XL	XXL	3XL
Back length [cm]	25 - 29,5	30 - 36,5	37 - 43,5	44 - 52,5	53 - 61,5	62 - 70,5	71 - 80
Neck circumference [cm]	23 - 40	25 - 44	33 - 45	35 - 50	43 - 60	46 - 66	50 - 80
abdominal circumference [cm]	30 - 45	40 - 55	48 - 68	58 - 80	60 - 85	65 - 94	65 - 115
Art.-No.	0700-505XS	0700-505S	0700-505M	0700-505L	0700-505XL	0700-505XXL	0700-5053XL

Kniegelenk – Goni stabil | ROM | CDS®

Upper bandage (Goni bandage) – supplied with connecting strap
Fastened at the back



Size	XXL	XL	L	M	S	XS („Mini“-version)
Mid-thigh circumference [cm]	32 - 35	28 - 32	25 - 28	22 - 25	19 - 22	15 - 19
Art.-No. left	0700-050XXL-L	0700-050XL-L	0700-050L-L	0700-050M-L	0700-050S-L	0700-050XS-L
Art.-No. right	0700-050XXL-R	0700-050XL-R	0700-050L-R	0700-050M-R	0700-050S-R	0700-050XS-R

Goni counter-pull bandage – supplied with connecting strap



Size	XXL	XL	L	M	S	XS („Mini“-version)
Art.-No. left	0700-051XXL-L	0700-051XL-L	0700-051L-L	0700-051M-L	0700-051S-L	0700-051XS-L
Art.-No. right	0700-051XXL-R	0700-051XL-R	0700-051L-R	0700-051M-R	0700-051S-R	0700-051XS-R

Hinge

Description Hinge	VET Stabiliser Alu 14 mm	VET ROM Nano Hinge Alu 14 mm	VET CDS® Nano Hinge Alu 14 mm	VET ROM Piko Hinge Alu 14 mm	VET Stabiliser Alu 10 mm
Rod width [mm]	14				10
Suitable for shell size	XXL, XL, L, M, S				XS
Rod length [cm]	18	18	18	18	8
Art.-No. left	0700-2010-14	0700-2020-14-L	0700-3010-14-L	0700-2030-14	0700-2010-10
Art.-Nro right	0700-2010-14	0700-2020-14-R	0700-3010-14-R	0700-2030-14	0700-2010-10

Lower bandage (Goni bandage)



Size	L		M		S		XS	
shell height [cm]	10		7		4		3	
Mid-calf circumference [cm]	L-1 12 - 15	L-2 15 - 18	M-1 11 - 14	M-2 14 - 17	S-1 9 - 12	S-2 12 - 16	XS-1 7 - 11	XS-2 11 - 16
Art.-Nr.	0700-003L1	0700-003L2	0700-003M1	0700-003M2	0700-003S1	0700-003S2	0700-003XS1	0700-003XS2



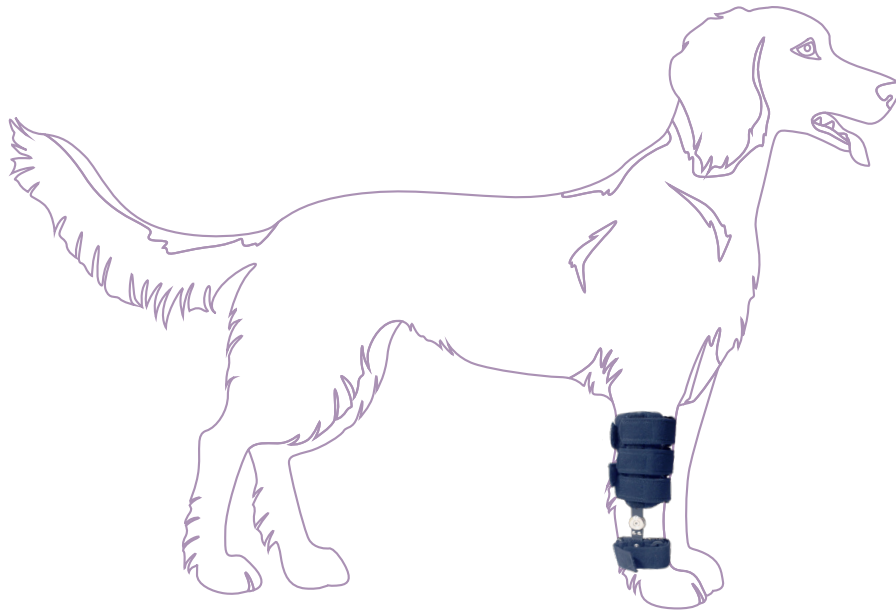
Carpal joint brace for dogs

Karpi stop

For stabilisation and relief of the carpal joint with ROM Hinge to limit the ROM in the carpal joint, e.g. in cases of ligament weakness, overstretching, tearing, arthrosis or malpositions.

Includes:

- 1x Upper bandage
- 2x VET Stop Hinge, Alu 14 mm
or VET Stop Hinge, Alu 10 mm
- 1x Lower bandage



Please measure your dog

Please choose the upper and lower bandage based on circumference measurements 3 and 4.

Carpal joint – Karpi stop

Upper bandage (Karpi bandage)

Fastened at the back with two hook-and-loop fastener



Size	L	M	S	XS („Mini“-version)
Mid-forearm circumference [cm]	14 - 17	11 - 14	9 - 11	5 - 8
Shell height [cm]	12,5	12,5	12,5	5
Art.-No. left	0700-011L-L	0700-011M-L	0700-011S-L	0700-011XS-L
Art.-No. right	0700-011L-R	0700-011M-R	0700-011S-R	0700-011XS-R

Hinge

Description hinge	VET Stop Hinge Alu 14 mm	VET Stop Hinge Alu 10 mm
Rod Width [mm]	14	10
Suitable for Shell size	L, M, S	XS
Rod Length [cm]	13	8
Art.-No. left	0700-4010-14-L	0700-4010-10-L
Art.-No. right	0700-4010-14-R	0700-4010-10-R

Lower bandage (Karpi bandage)



Size	M		S		XS		XXS („Mini“-version)
Shell height [cm]	7		4		2		1,5
Circumference Metacarpus [cm]	M-1 11 - 14	M-2 14 - 17	S-1 9 - 11	S-2 12 - 16	XS-1 7 - 11	XS-2 11 - 16	XXS 4 - 7
Art.-No.	0700-003M1	0700-003M2	0700-003S1	0700-003S2	0700-003XS1	0700-003XS2	0700-003XXS

Hinge Selection

	Width	Carpal (Karpi)		Knee (Goni)	
		left/lat. right/med.	right/lat. left/med.	left/lat. right/med.	right/lat. left/med.
VET Stabiliser Alu	14 mm			0700-2010-14	0700-2010-14
				0700-2010-14	0700-2010-14
VET ROM Nano Hinge	14 mm			0700-2020-14-L	0700-2020-14-R
VET CDS® Nano Hinge Alu	14 mm			0700-3010-14-L	0700-3010-14-R
VET Stop Hinge Alu	14 mm	0700-4010-14-L	0700-4010-14-R		
		0700-4010-14-R	0700-3010-14-L		
VET ROM Piko Hinge Alu	14 mm			0700-2030-14	0700-2030-14
VET Stabiliser Alu	10 mm			0700-2010-10	0700-2010-10
				0700-2010-10	0700-2010-10
VET Stop Hinge Alu	10 mm	0700-4010-10-L	0700-4010-10-R		
		0700-4010-10-R	0700-4010-10-L		

Hinge Selection

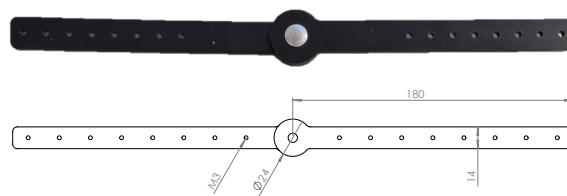
Elbow (Kybi)	
left/lat. right/med.	right/lateral left/med.
0700-2010-14	0700-2010-14
0700-2010-14	0700-2010-14
0700-2020-14-R	0700-2020-14-L
0700-3010-14-R	0700-3010-14-L
0700-2030-14	0700-2030-14
0700-2010-10	0700-2010-10
0700-2010-10	0700-2010-10

VET Stabiliser Alu 14 mm

Features

- 14 mm Alu, black anodised or bare
- Free-moving stabiliser
- Suitable for both sides

VET Stabiliser	Art.No.
VET Stabiliser Alu 14 mm	0700-2010-14

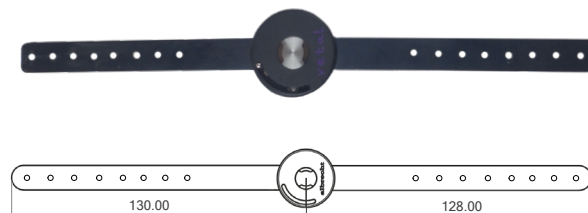


VET ROM Nano Hinge Alu 14 mm

Features

- 14 mm Alu, black anodised and bare
- Stops adjustable without tools
- Extension stop adjustable from -10° to 100° in 10° increments
- Flexion stop adjustable from 0° to 130° in 10° increments
- Immobilisation adjustable from -10° to 100° in 10° increments
- Available for left and right

VET-ROM Nano Hinge	Art.No. left	Art.-No. right
VET-ROM Nano Hinge Alu 14 mm	0700-2020-14-L	0700-2020-14-R

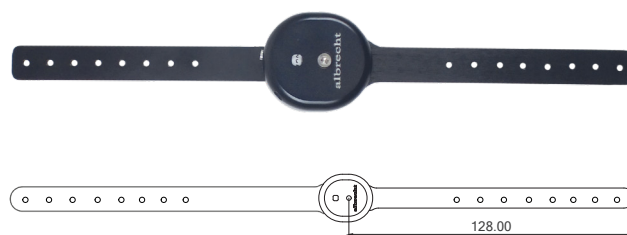


VET CDS® Nano Hinge Alu 14 mm

Features

- 14mm Alu, black anodised or bare
- Max. torque: 2.2 Nm
- Spring force individually adjustable
- Tool-free activation/deactivation of the corrective force without changing the preset spring force
- Correction range adjustable in 10° steps
- Position of the correction range selectable in 90° increments via an adjustable hinge rod
- Available for left and right

VET-CDS® Nano Hinge	Art.No. left	Art.-No. right
VET-CDS® Nano Hinge Alu 14 mm	0700-3010-14-L	0700-3010-14-R

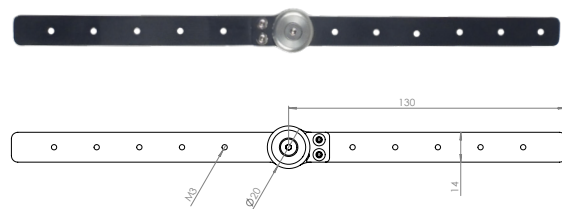


VET Stop Hinge Alu 14 mm

Features

- 14mm Alu, black anodised or bare
- Free-moving stabiliser with a fixed stop in dorsalflexion
- Unrestricted movement into plantarflexion
- Stop wedge can be removed
- Available for left and right

VET-Stop Hinge	Art.No. left	Art.-No. right
VET-Stop Hinge Alu 14 mm	0700-4010-14-L	0700-4010-14-R

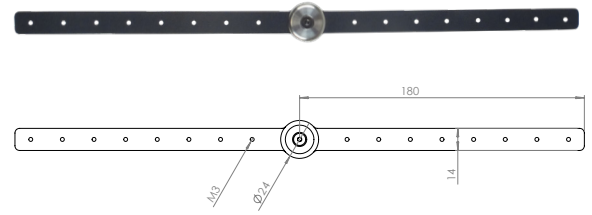


VET ROM Piko Hinge Alu 14 mm

Features

- 10 mm aluminium, black anodised or bare
- Extension stops adjustable from 0° to 180° in 30° increments
- Flexion stops adjustable from 0° to 180° in 30° increments
- Immobilisation adjustable from 0° to 180° in 30° increments
- Suitable for both sides

VET ROM Piko hinge Alu	Art. No.
VET ROM Piko hinge Alu 14 mm	0700-2030-14

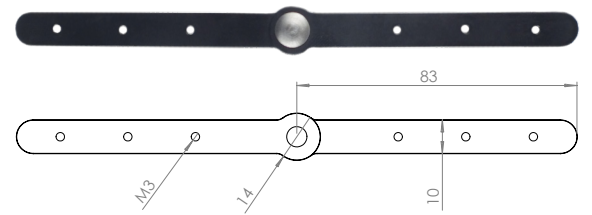


VET Stabiliser Alu 10 mm

Features

- 10 mm Alu, black anodised or bare
- Free-moving stabiliser
- Suitable for both sides

VET Stabiliser	Art. No.
VET Stabiliser Alu 10 mm	0700-2010-10

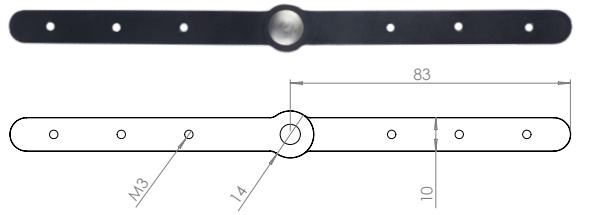


VET Stop hinge Alu 10 mm

Features

- 10 mm Alu, black anodised or bare
- Various stop limiters possible
- Suitable for both sides

VET Stop Hinge	Art. No. left	Art. No. right
VET Stop Hinge Alu 10 mm	0700-4010-10-L	0700-4010-10-R



vetal-Team



**vetal | Orthopaedic technology for animals by
albrecht GmbH**

Chiemseestraße 81
83233 Bernau am Chiemsee
Deutschland
Phone: +49 (0) 8051 961 29 - 0
Fax: +49 (0) 8051 961 29 - 30
Email: info@vet-al.de
Web: www.vet-al.de

