

# Kynosan orthopaedic products for dogs

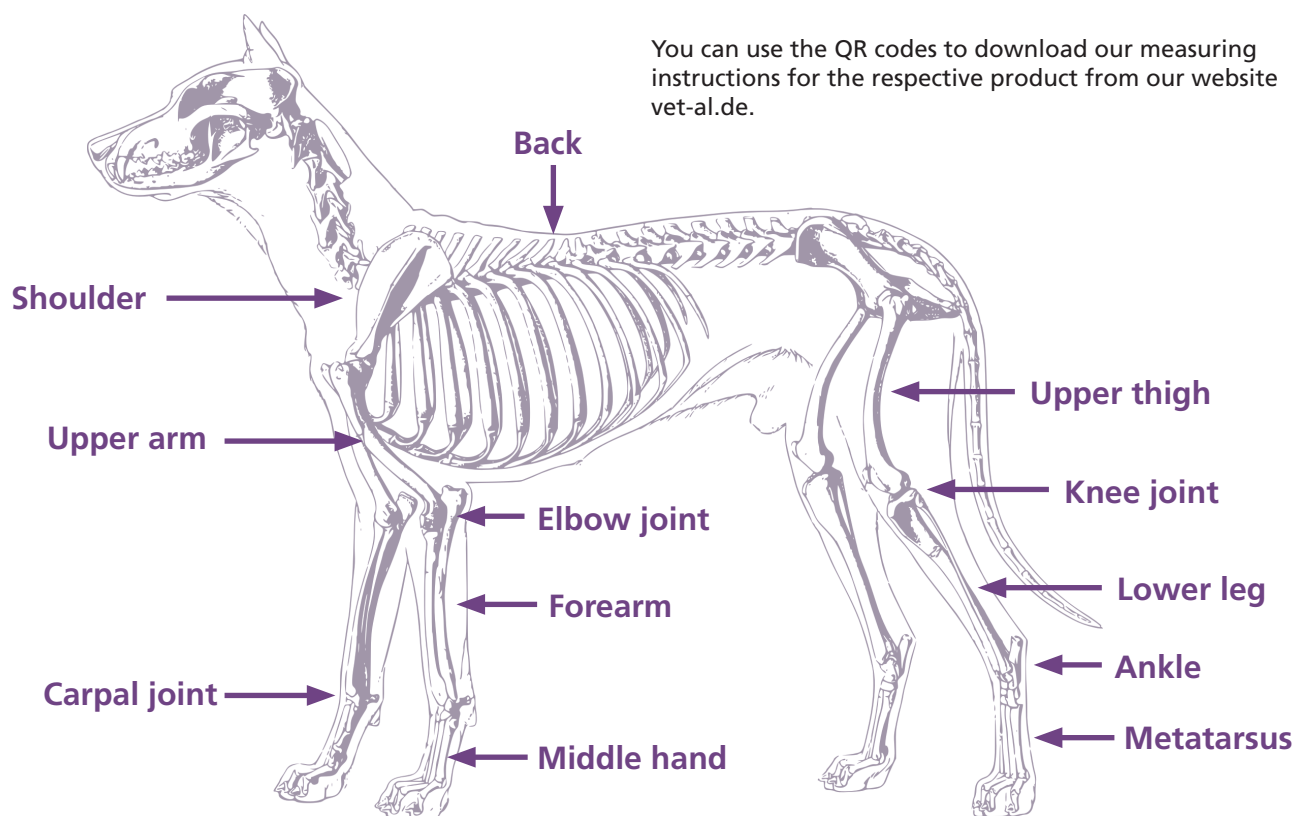
2026



## Content

<b>Karpi stabil</b> Carpal joint bandage for dogs	5	<b>Omo firm</b> Shoulder bandage for dogs	17
<b>Karpi stop</b> Carpal joint brace for dogs	6	<b>MKS vet Torso stabil</b> Back brace for dogs	20
<b>Residu protect</b> Stump protection for dogs	7	<b>Goni firm</b> Knee bandage for dogs	21
<b>CDS® Piko Dynamic hinge brace</b> for dogs	8	<b>Goni stabil</b> Knee brace for dogs	22
<b>Kyno boot</b> Stabilising 3D-printed orthosis for dogs	10	<b>Goni ROM</b> Knee brace for dogs	23
<b>Kybi soft</b> Elbow bandage for dogs	12	<b>Goni CDS®</b> Knee brace for dogs	24
<b>Kybi firm</b> Elbow bandage for dogs	13	<b>Talu stabil</b> Ankle bandage for dogs	25
<b>Kybi stabil</b> Elbow brace for dogs	14	<b>Talu firm</b> Ankle bandage for dogs	26
<b>Kybi ROM</b> Elbow brace for dogs	15	<b>Talu Rom</b> Ankle brace for dogs	27
<b>Kybi CDS®</b> Elbow brace for dogs	16	<b>Neuro Mobil</b> Paw-lifting orthosis for dogs	28
		Dimension sheets	31

You can use the QR codes to download our measuring instructions for the respective product from our website [vet-al.de](http://vet-al.de).





### „vetal“ is a product line from albrecht GmbH

a family-run company based in Bernau am Chiemsee. The company has been developing and producing innovative and high-quality products in the field of orthopaedic technology for humans for over 30 years.

For ten years, we have also been utilising our many years of experience in the development of products for the care of animals. This means that dogs, horses, alpacas and other animals can now benefit from the standards and therapeutic principles that have long been established for humans.

The products shown in this catalogue are examples of possible treatments that can also be used for other joints. Treatment with a bandage, splint or orthosis can also be helpful for other injuries and pathologies not shown in this catalogue.

If you have any questions, please do not hesitate to contact us.





## Karpi stabil Carpal joint bandage for dogs

For stabilisation and relief  
of the carpal joint,  
e.g. for mild ligament weakness,  
osteoarthritis or malpositions.



### Characteristics Karpi stabil

- Stabilising carpal joint bandage.
- Made from neoprene.
- Can be used for the left or right front leg.
- Recess for the thumb pads.
- Velcro straps close in opposite directions to prevent twisting.
- Additional stabilisation with plastic or moulded aluminium rods, which can also be removed if only light stabilisation is required.

### Article number:

**2210**

The Karpi stabil bandage is  
customized to fit the dog's measurements.



→ Carpal joint measurement

## Karpi stop Carpal joint brace for dogs

For stabilisation and relief of the carpal joint with ROM joint to limit the ROM in the carpal joint, e.g. in cases of ligament weakness, overstretching, tearing, arthrosis or malpositions.



### Characteristics Karpistop

- Orthosis to limit the ROM in the carpal joint.
- Fitting using textile shells in the metacarpal and ulna area.
- Stable aluminium runners laterally and medially with a fixed stop in dorsiflexion to prevent the foot from stepping through, as well as free movement in plantar flexion to ensure a full range of motion. However, the stop can also be made in the direction of plantar flexion.
- Free movement in dorsiflexion and plantar flexion when the stop wedge is removed.

Also available in the "Mini" version for small dogs.

### Article numbers:

left side: **2411-L**  
right side: **2411-R**

### Article numbers:

left side: **2411XS-L**  
right side: **2411XS-R**

The Karpistop carpal joint brace is customized to fit the dog's measurements.



→ Carpal joint measurement

## Residu protect Stump protection for dogs

To protect the stump following partial  
or complete loss of a paw.



### Characteristics Residu protect

Orthosis to limit the ROM in the carpal joint.

- Residu protect is made of neoprene.
- Radial strap fastening. Replaceable outsole (two replacement soles included in the delivery).



**Article number:**  
**2200**

Residu protect stump protection is customized  
to fit the dog's measurements.

Please also send us a photograph of the affected  
limb and sketch the shape, length and width of the stump on the stump  
measurement sheet.



→ Stump measurement

## CDS® Piko Dynamic hinge brace for dogs

For mobilisation after paralysis.  
Contracture treatment is also possible.




The splint can also  
be produced for  
other joints.  
Please contact us.

### Article numbers:

left side: **2311-L**

right side: **2311-R**

The CDS® Piko dynamic hinge brace is  
customized to fit the dog's measurements.

→ Carpal joint measurement 

or  
→ Ankle joint measurement



and  
→ Paw measurement





## Kyno boot Stabilising 3D-printed orthosis for dogs

For stabilisation the paw and metacarpus or metatarsus with an adjustable angle at the toe joint. For example, in cases of peripheral paralysis, following injuries or due to neurological conditions such as radial nerve palsy.



### Characteristics Kyno boot

- 3D-printed TPU orthosis.
- Adjustable angle at the toe joint in 12-degree increments.
- Removable neoprene lining (4 mm thick).
- Special strap system.
- Non-slip sole.

4 sizes with lining





Dimensions without lining						
Size	shoe length	ML-made-to-measurement shoe	ML-made-to-measurement shell	shell length	inside height	total length
S	67 mm	34,5 mm	29 mm	56 mm	90 mm	155 mm
M	75 mm	40,0 mm	33 mm	64 mm	103 mm	180 mm
L	82 mm	44,0 mm	36 mm	72 mm	110 mm	205 mm
XL	96 mm	54,0 mm	42 mm	80 mm	127 mm	235 mm

Available in 4 sizes (dimensions excluding lining material see table)

The lining is made from 4 mm neoprene, can be cut to size and is attached to the orthosis using velcro.

The angle of the toe joint and the length for the sole must be individually adjusted by an orthopaedic technician to suit the specific dog.

Should a different size be required, a customised modification based on measurements is possible for an additional charge.

**Article numbers:**

- 2701-S**
- 2701-M**
- 2701-L**
- 2701-XL**

The Kyno boot is customized to fit the dog's measurements.

Individual sizing on request.

→ Kyno boot measurement



## Kybi soft Elbow bandage for dogs

The elbow bandage to protect the elbow joint, e.g. in the case of pressure sores.



### Characteristics Kybi soft

- Fastening harness made of breathable airmesh with Velcro surfaces.
- Made of neoprene.
- Adjustable strap for fixation included.

### Article numbers:

left side: **2220-L**  
right side: **2220-R**  
both sides: **2220-B**

The Kybi Soft elbow bandage is customized to fit the dog's measurements.



→ Elbow measurement

## Kybi firm Elbow bandage for dogs

The stabilising elbow bandage provides functional support for small dogs with inflammatory or degenerative changes in the elbow joint.



### Characteristics Kybi firm

- Fastening harness made of breathable airmesh with Velcro surfaces.
- Adjustable strap for fixation included.
- Padded neoprene bandage with Velcro straps for fitting above and below the elbow.
- Front pocket for adjustable aluminum reinforcement element.
- Depending on the indication, the reinforcement element is also available in plastic, spring steel or as a spiral spring rod.

### Article numbers:

left side: **2223-L**

right side: **2223-R**

The Kybi firm elbow bandage is customized to fit the dog's measurements.



→ Elbow measurement

## Kybi stabil Elbow brace for dogs

The stabilising elbow brace for functional support in cases of joint instability, ligament weakness, osteoarthritis and elbow dysplasia.



### Characteristics Kybi stabil

- Attachment harness made of breathable airmesh with Velcro surfaces.
- Upper and lower bandage made of neoprene with Velcro straps.
- Stabilisation of the elbow joint with adjustable aluminium rods.

### Article numbers:

left side: **2221-L**  
right side: **2221-R**

The Kybi stabil elbow brace is customized to fit the dog's measurements.

→ Elbow measurement



Also available in the "Mini" version for small dogs.

### Article numbers:

left side: **2221XS-L**  
right side: **2221XS-R**

## Kybi ROM Elbow brace for dogs

For immobilisation and gradual, controlled return to movement after injury and surgery.



### Characteristics Kybi ROM

- Attachment harness made of breathable air-mesh with Velcro surfaces.
- Upper and lower bandage made of neoprene with Velcro straps.
- Extension stop adjustable from  $-10^{\circ}$  to  $100^{\circ}$  in  $10^{\circ}$  increments.
- Flexion stop adjustable from  $-10^{\circ}$  to  $130^{\circ}$  in  $10^{\circ}$  increments.
- Immobilisation of the hinge from  $-10^{\circ}$  and  $100^{\circ}$  in  $10^{\circ}$  increments.

### Article numbers:

left side: **2222-L**

right side: **2222-R**

The Kybi ROM elbow brace is customized to fit the dog's measurements.



→ Elbow measurement

## Kybi CDS® Elbow brace for dogs

The dynamic elbow brace with spring joint for mobilisation after paralysis and contracture treatment.



### Characteristics Kybi CDS®

- Attachment harness made of breathable airmesh with Velcro surfaces.
- Upper and lower bandage made of neoprene with Velcro straps.
- Mobilisation after paralysis and contracture treatment.
- Individually adjustable spring force.
- Tool-free switching on and off of the redression force without changing the set spring force.
- Adjustment of the effective range in 10° increments.

### Article numbers:

left side: **2321-L**

right side: **2321-R**

The Kybi CDS® elbow brace is customized to fit the dog's measurements.



→ Elbow measurement

## Omo firm Shoulder bandage for dogs

The stabilising shoulder bandage for functional shoulder support.



### Characteristics Omo firm

- Stabilising shoulder bandage.
- Fastening harness made of breathable airmesh with Velcro surfaces.
- Upper arm support made of neoprene with Velcro straps.
- Shoulder stabilisation can be individually adjusted using the Velcro strap.

### Article numbers:

**2214**

The Omo firm shoulder bandage is customized to fit the dog's measurements.



→ Shoulder measurement





## MKS vet Torso stabil Back brace for dogs

A stabilising back brace designed to support the spine, for example in cases of back problems, muscle weakness, a slipped disc, spondylosis, or osteoarthritis.



### Characteristics MKS vet Torso stabil

- Brace made from breathable Airmesh.
- Wide chest and abdominal panels for optimal pressure distribution.
- Adjustable with Velcro straps.
- Plastic rods on both sides of the spine and at the sides of the chest provide stabilisation whilst remaining flexible enough to avoid restricting either movement or breathing.
- The rods can be removed if only light stabilisation is required.
- Additional rods are available on request for more stabilisation.



The brace can be fitted with an attachment for the Goni products.

### Article numbers:

MKS vet Torso stabil: **2500**

MKS vet Torso stabil Kombi Goni: **2505**

Back brace with additional attachment for the Goni products.

The MKS vet Torso stabil is customized to fit the dog's measurements.



→ Back measurement



## Goni firm Knee bandage for dogs

The stabilising knee bandage for functional support of the knee for patellar dislocation and slight ligament weakness.



### Characteristics Goni firm

- Stabilising knee bandage.
- Made from neoprene.
- Adjustable strap for fixation included.

### Article numbers:

left side: **2250-L**

right side: **2250-R**

The Goni firm knee bandage is customized to fit the dog's measurements.



→ Knee measurement

## Goni stabil Knee brace for dogs

The Goni stabil knee brace for dogs stabilises and relieves pressure on the knee joint during rehabilitation.



### Characteristics Goni stabil

- Attachment harness made of breathable airmesh with Velcro surfaces.
- Upper and lower bandage made of neoprene with Velcro straps.
- Stabilisation of the knee joint with adjustable aluminium rods.

Also available in the "Mini" version for small dogs.

### Article numbers:

left side: **2251-L**  
right side: **2251-R**  
both sides: **2251-B**

The Goni stabil knee brace is customized to fit the dog's measurements.

### Article numbers:

left side: **2251XS-L**  
right side: **2251XS-R**

→ Knee measurement



## Goni ROM Knee brace for dogs

The stabilising knee brace for immobilisation and gradual, controlled return to movement after injury and surgery.



### Characteristics Goni ROM

- Attachment harness made of breathable airmesh with Velcro surfaces.
- Upper and lower bandage made of neoprene with Velcro straps.
- Extension stop adjustable from  $-10^{\circ}$  to  $100^{\circ}$  in  $10^{\circ}$  increments.
- Flexion stop adjustable from  $-10^{\circ}$  to  $130^{\circ}$  in  $10^{\circ}$  increments.
- Immobilisation of the hinge can be adjusted from  $-10^{\circ}$  and  $100^{\circ}$  in  $10^{\circ}$  increments.

### Article numbers:

left side: **2252-L**

right side: **2252-R**

The Goni ROM knee brace is customized to fit the dog's measurements.



→ Knee measurement

## Goni CDS® Knee brace for dogs

The dynamic knee brace with spring joint for mobilisation after paralysis and contracture treatment.



### Characteristics Goni CDS®

- Attachment harness made of breathable airmesh with Velcro surfaces.
- Upper and lower bandage made of neoprene with Velcro straps.
- Tool-free switching on and off of the redression force without changing the set spring force.
- Adjustment of the effective range in 10° increments.

### Article numbers:

left side: **2351-L**

right side: **2351-R**

The Goni CDS® knee brace is customized to fit the dog's measurements.



→ Knee measurement

## Talu stabil Ankle bandage for dogs

For stabilisation and relief of the ankle joint,  
e.g. in cases of slight ligament weakness,  
osteoarthritis or malalignment.



### Characteristics Talu stabil

- Stabilising ankle bandage.
- Made from neoprene.
- Additional stabilisation with spring steel rods, which can also be removed if only light stabilisation is required.

### Article numbers:

left side: **2240-L**

right side: **2240-R**

The Talu stabil ankle bandage is customized to fit the dog's measurements.

→ Ankle joint measurement



## Talu firm Ankle bandage for dogs

For immobilization of the ankle joint, e.g. in cases of inflammatory or degenerative ankle changes.



### Characteristics Talu firm

- Immobilizing ankle bandage.
- Padded neoprene bandage with Velcro straps for fitting above and below the ankle.
- Front pocket for molded stainless steel reinforcement element.
- Reinforcement element pre-formed at an angle of 135 degrees (angle can be adjusted).
- Reinforcement element also available in plastic, aluminum or spring steel depending on the indication.

### Article numbers:

left side: **2243-L**

right side: **2243-R**

The Talu firm ankle bandage is customized to fit the dog's measurements.



→ Ankle joint measurement

## Talu ROM Ankle brace for dogs

To stabilise and limit the range of motion in the ankle joint, e.g. in cases of joint instability or hyperextension.



### Characteristics Talu ROM

- Textile upper and lower bandages with Velcro straps.
- Adjustable additional padding in the Achilles tendon area.
- Rom-hinge
  - Extension stop adjustable from  $-10^{\circ}$  to  $100^{\circ}$  in  $10^{\circ}$  increments.
  - Flexion stop adjustable from  $-10^{\circ}$  to  $130^{\circ}$  in  $10^{\circ}$  increments.
  - Immobilisation of the hinge can be adjusted from  $-10^{\circ}$  and  $100^{\circ}$  in  $10^{\circ}$  increments.

### Article numbers:

left side: **2242-L**  
right side: **2242-R**

The Talu Rom ankle brace is customized to fit the dog's measurements.

→ Ankle joint measurement



## Neuro mobil Paw-lifting orthosis for dogs

The paw-lifting orthosis prevents the hind leg from dragging in cases of paralysis, neurological deficits, or muscle weakness. When combined with an elastic connection in the harness (options A and B), it can also assist in lifting the hind limbs. This prevents over-dragging and facilitates walking, for example, in cases of cauda equina syndrome, degenerative myelopathy, or weak hind legs.

Option A: With vetal harness - both side



### Scope of delivery

Dog harness **vetal**  
Airmesch Neuro mobil



Paw shoe Neuro mobil  
2 pieces



Replacement Sole Neuro mobil  
4 pieces



Expander rope Neuro mobil  
LONG 3 mm  
or  
Expander rope Neuro mobil  
LONG 5 mm  
2 of each



(The strength of the expander rope depends on the dog's size and weight)

→ Neuro mobil measurement



**Option B:** Connecting element with a D-ring for sewing onto your own harness sewing onto your own harness



Scope of delivery

Connecting element Neuro mobil  
with a D-ring for sewing



Paw shoe Neuro mobil  
2 pieces



Replacement Sole Neuro mobil  
4 pieces



Expander rope Neuro mobil  
LONG 3 mm  
or  
Expander rope Neuro mobil  
LONG 5 mm  
2 of each



**Option C:** Connection from the paw shoe to a bandage above the ankle joint – can be fitted on one side



Scope of delivery

Paw shoe Neuro mobil  
1 piece



Replacement Sole Neuro mobil  
4 pieces



Lower leg bandage Neuro mobil  
with D-ring



Expander rope Neuro mobil  
SHORT 3 mm  
or  
Expander rope Neuro mobil  
SHORT 5 mm  
1 of each



### Features of the Neuro mobil

- Vetal harness made of Airmesh with attachment loops for an elastic band. (Option A). We recommend this option for small dogs.
- Connector with a D-ring for sewing onto your own harness (Option B).
- Lightweight paw shoe made of neoprene with elastic straps. Replaceable sole (2 replacement soles included).
- Long, adjustable expander rope with carabiner in 3 mm or 5 mm thicknesses for connecting the paw shoe and harness. (Variants A and B)
- Short, adjustable expander rope with carabiner for connecting the paw boot to the lower leg bandage (Option C).
- Padded lower leg bandage with D-ring for attaching the expander rope above the hock (Option C).

		Option A both side with vetal harness	Option B both side with ovm harness	Option C one-sided with lower- leg bandage
Articel name	Article number	Scope of delivery	Scope of delivery	Scope of delivery
Dog Harness vetal made of Airmesh Neuro mobil	0600-110	1 x		
Connecting element Neuro mobil with a D-ring for sewing onto your own harness	0710-300-01		1 x	
Paw show Neuro mobil with replaceable sole and loop	0500-10	2 x	2 x	1 x
Replacement Sole Neuro mobil for paw shoe	0710-500-11	4 x	4 x	2 x
Expander rope Neuro mobil LONG - 3 mm thick with 2 carabiners, adjustable in length for large and heavy dogs	0710-400-L3	2 x or	2 x or	
Expander rope Neuro mobil LONG - 5 mm thick with 2 carabiners, adjustable length for small and medium-sized dogs	0710-400-L5	2x	2x	
Lower leg bandage Neuro mobil with D-ring adjustable via Velcro straps, with adjustable neoprene padding	0700-041			1 x
Expander rope Neuro mobil SHORT - 3 mm thick with 2 carabiners, adjustable length for small and medium-sized dogs or	0710-400-K3			1 x or
Expander rope Neuro mobil SHORT - 5 mm thick with 2 carabiners, adjustable in length for large and heavy dogs	0710-400-K5			1 x

### Article numbers:

Option A - both side: **2301 A**

Option B - both side: **2301 B**

Option C - one-sided **2301 C**

The Neuro mobil paw-lifting orthosis is customized to fit the dog's measurements.

→ Neuro mobil measurement



## Measuring instructions

We have created detailed illustrated measuring instructions and dimension sheets for you to fill in. You can download them as PDFs.

These QR codes lead to the download of the dimension sheets as PDFs. You can fill in the PDFs directly with your measurements, save them and send them to us by e-mail.

**info@vet-al.de**

**phone: +49 8051 96129-0**

Images and videos can also be sent via WhatsApp. You can receive the phone number upon request.



### Carpal joint



### Stump



### Neuro mobil



### Shoulder



### Elbow



### Knee



### Ankle



### Back



### Paw

vetal-team



**vetal | Orthopaedic** technology for animals  
by albrecht GmbH  
Chiemseestrasse 81  
83233 Bernau am Chiemsee  
Bernau am Chiemsee Germany  
Phone: +49 (0) 8051 961 29 - 0  
Fax: +49 (0) 8051 961 29 - 30  
Email: [info@vet-al.de](mailto:info@vet-al.de)  
Web: [www.vet-al.de](http://www.vet-al.de)